



Thailand Regulation on Plant Health

Mrs. Natthaporn Uthaimongkol
Office of Agricultural Regulation
Department of Agriculture

Seminar on Imports of Plants and Plant products into Thailand
24 March 2021
Bangkok, Thailand

Content

1. Organization
2. Act.
3. Import procedure
4. Example

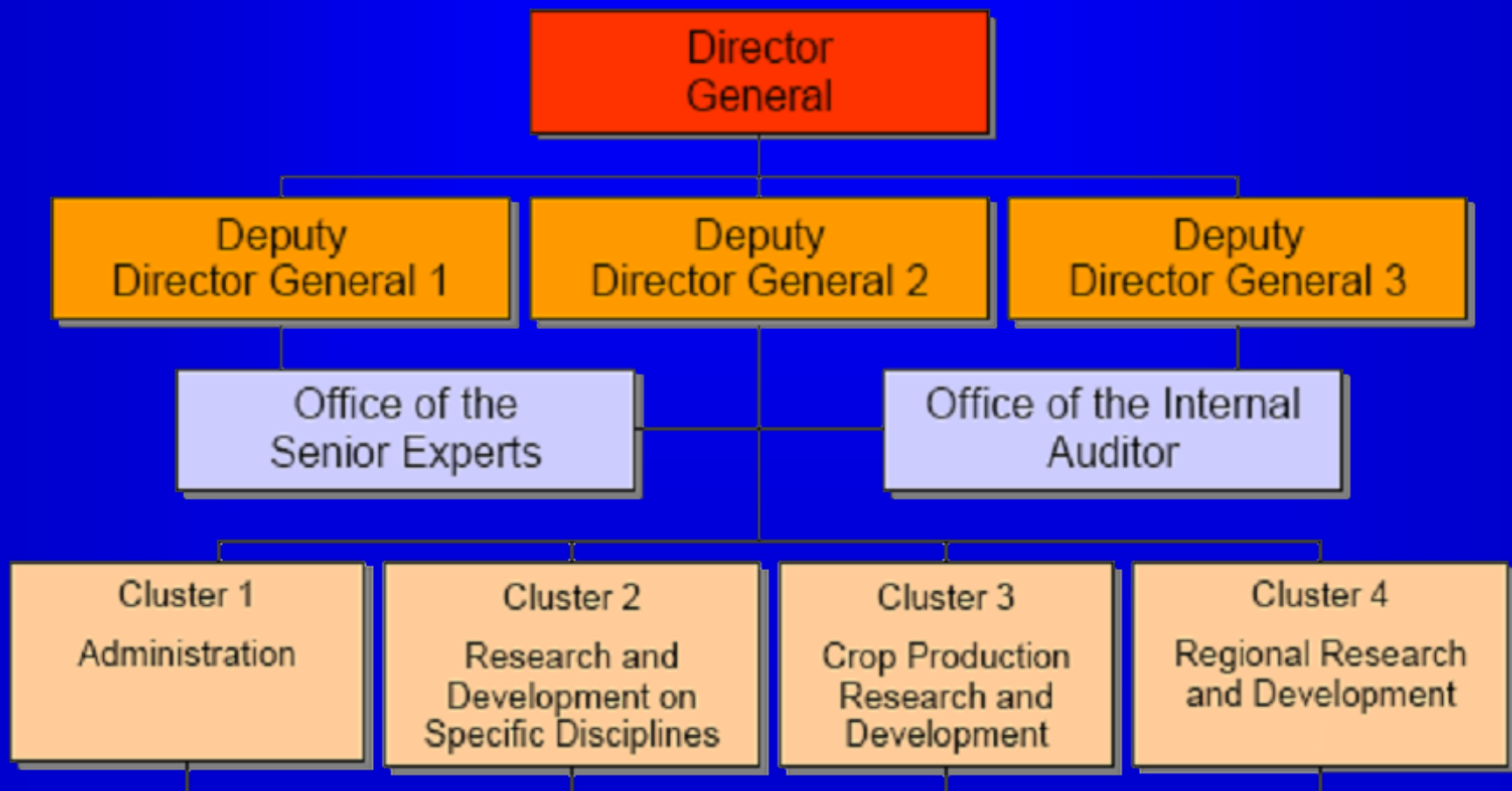
1. Organization

- Department of agriculture
 - : Office of Agricultural Regulation
 - : Plant Protection research and development office

Department of Agriculture: Mandates

- 1. Conduct research and development studies on various agricultural disciplines concerning crops and farm mechanization.
- 2. Provide services on the analysis, inspection, quality certification and advise on soil, water, fertilizer, crops, agricultural inputs production and products quality export promotion and other areas of concerns.
- 3. Transfer of agricultural technology to concerned government officials, farmers and the private sector.
- 4. Provide regulatory services in compliance with agricultural regulations; Plant Quarantine Act, Rubber Act, Chemical and Fertilizer Act, Seed Act and Hazardous Substance Act

Department of Agriculture



Organization Chart and Responsibility

Department of Agriculture

Cluster 1

(Administration)

- Office of the Secretary
- Personnel Division
- Finance Division
- Planning and Technical Division
- *Office of Agricultural Regulation ******
- *One Stop Service center*

Cluster 2

(Basic & applied research & development) and development)

- *Plant Protection R&D Office ******
- Agricultural Production Sciences R&D Office
- Post-harvest and Processing R&D Office
- Biotechnology R&D Office
- Plant Varieties Protection Division
- *Plant Standard and Certification Office*
- *Seed R&D Office*

Cluster 3

(Production research

- Field Crops Research Institute
- Horticulture Research Institute
- Rubber Research Institute
- Agricultural Engineering Research Institute

Cluster 4

(Regional research & development)

- Office of Agricultural R&D (Regions 1-8)

Office of Agricultural Regulation



```
graph TD; A[Office of Agricultural Regulation] --> B[Administration Section]; A --> C[Licensing and Registration Division]; A --> D[Technical Group]; C --> E[Plant Quarantine Station (48)]; C --> F[Export Plant Quarantine Service Group]; C --> G[Pesticide Regulatory Sub-division]; C --> H[Fertilizer Regulatory Sub-division]; C --> I[Seed Regulatory Sub-division]; C --> J[Agricultural Inspector Sub-Division];
```

**Administration
Section**

**Licensing and
Registration
Division**

**Technical
Group**

**Plant Quarantine
Station (48)**

**Export Plant
Quarantine Service
Group**

**Pesticide
Regulatory
Sub-division**

**Fertilizer
Regulatory
Sub-division**

**Seed
Regulatory
Sub-division**

**Agricultural
Inspector
Sub-Division**

Office of Agricultural Regulation responsibilities are

1. update the import, export and in transit requirements in the movement of plants, plant products, seeds, chemical fertilizer, pesticides and rubber.
2. provides services on import and export of agricultural products and articles through Plant Quarantine Stations. (provides import permit)
3. Operate 48 plant quarantine stations at check points throughout the country
4. Monitoring fertilizers, pesticides, rubber and seeds..

Technical Group

- 1. providing the import permit under PQ Act.
- 2. monitoring and notification for non compliance of plant and plant product under PQ act.
- 3. Response to a request with all stakeholder
- 4. Research and development process involved the import of plants under PQ Act.

Plant Quarantine Station

1. Documentation checking

- Form P.Q 5
- PC
- Import permit
- Non GMO (propagation & seeds)
- Commercial invoice
- Packing list
- Import entry
- Bill of Labelling

2. Consignment checking

- Container No
- Type and Quantity
- Labelling and Packaging
- Condition compliance
- Sampling
- Pest checking
- Allowance/refuse of entry/Destruction

PQ stations (48)

North

- 1.. Chiangmai Airport P.Q. Station
- 2.. Chiangrai Airport P.Q. Station
3. Maesai P.Q. Station
4. Chiangsaen P.Q. Station
5. Chiangkong P.Q. Station
- 6.. Maesod P.Q. Station
7. Maesariang P.Q. Station
8. Maehongsorn P.Q. Station
9. Tung P.Q. Station

Northeast

10. Nong Kai P.Q. Station
11. Mukdahan P.Q. Station
- 12.. Tali P.Q. Station
13. Chiangkani P.Q. Station
14. Ba-ung karn P.Q. Station
15. Nakorn panom P.Q. Station
16. Chong Meg P.Q. Station
17. ChongSa-ngum P.Q. Station
18. Chong Jom P.Q. Station

East

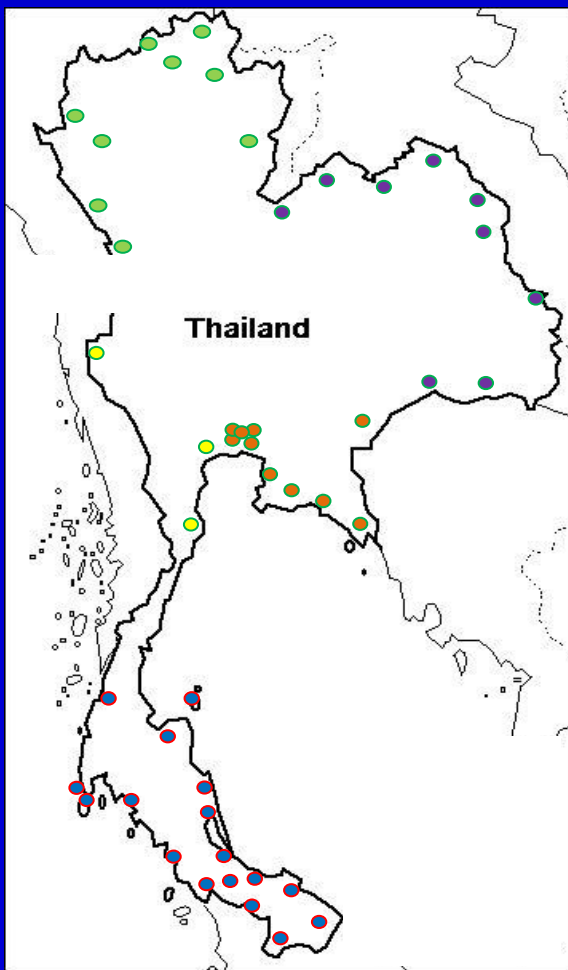
19. Aranyaprathet P.Q. Station
20. U-Tapao Airport P.Q. Station
21. Sattaheep P.Q. Station
22. Laemchabang P.Q. Station
23. Klongyai P.Q. Station
24. Chantaburi P.Q. Station

Central

25. Suvarnabhumi Airport P.Q. Station
26. Bangkok Maritime Port P.Q. Station
27. Bangkok Post Office P.Q. Station
28. Lad Krabang P.Q. Station
29. Dorn Mung P.Q. Station
30. Mae Kong P.Q. Station

South

31. Ranong P.Q. Station
32. Phuket Maritime Port P.Q. Station
33. Satun Maritime Port P.Q. Station
34. Sadao P.Q. Station
35. Betong P.Q. Station
36. Tak Bai Maritime Port P.Q. Station
37. Pattani Maritime Port P.Q. Station
38. Haad Yai Airport P.Q. Station
47. Ban Pragob P.Q. Station
39. Phuket Airport P.Q. Station
40. Kantang Maritime Port P.Q. Station
41. Wangprachan P.Q. Station
42. Padang Besar P.Q. Station
43. Sugai Kolok P.Q. Station
44. Krabi P.Q. Station
45. Songkhla Maritime Port P.Q. Station
46. Surattani Airport P.Q. Station
48. Koa Sa-Mui P.Q. Station



Plant Protection Research and Development Office:

- 1. Conduct research, study and survey on plant pests and diseases and recommends environmentally sound and effective control measures.
- 2. Conduct pest risk analysis
- 3. Stipulate phytosanitary requirements, restrictions and prohibitions on imported plants and plant products

**Organizational Structure of
Plant Protection Research and Development Office**

PPRDO

Research Project Administrative Division

Administrative Sub-Division

Entomology and Zoology

Research Group

Insect Taxonomy Section

Biological Control Section

Pesticide Application Section

Mite and Spider Section

Agricultural Zoology Section

Plant Pathology

Research Group

Mycology Section

Bacteriology Section

Virology Section

Nematology Section

Plant Quarantine

Research Group

**Plant Quarantine
Pest Section**

**Pest Risk Analysis
Section**

**Plant Pest
Surveillance Section**

**Plant quarantine
treatment Section**

Weed Science

Research Group

Plant Pest Management

Research Group

1. Plant Quarantine Pest Section

- Inspection of certain import/export consignments
- Detailed pest diagnosis
- Monitoring of P.Q. pests
- Development of pest diagnosis techniques

2. Pest Risk Analysis Section

- **Comply information for market access**
- **Conduct PRA**
- **Stipulate phytosanitary requirements, restrictions and prohibitions on imported plants and plant products**

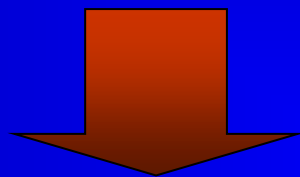
3. Plant Quarantine Treatment Section

- **Develop post-harvest disinfestation treatment**
- **Supervise treatment under bilateral agreement**

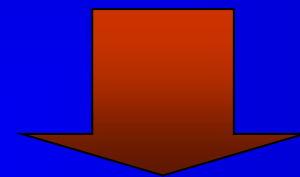
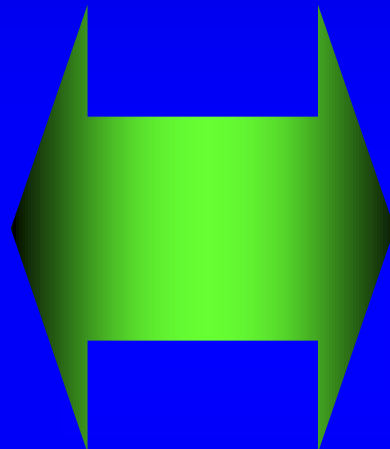
4.Plant pest surveillance

- Specific Survey for Quarantine pest
- General Survey for Quarantine pest

Plant Quarantine Operation



Office of
Agricultural
Regulation



Plant Protection
Research and
Development
Office

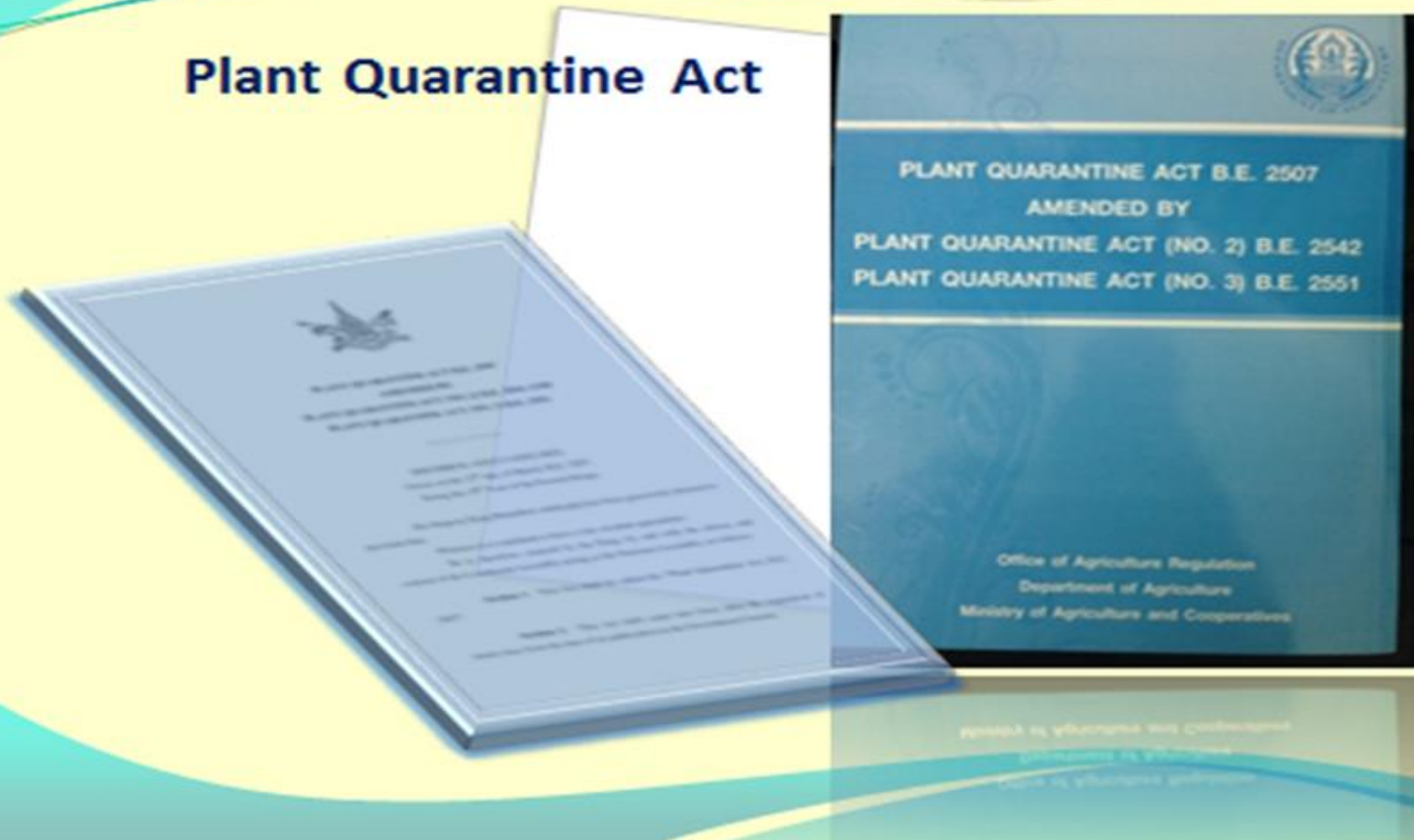
Operation

(48 plant quarantine stations
+ technical group)

Technical support
Plant Quarantine
research Group + others

2. ACT.

Plant Quarantine Act



History

- 1964 : Plant Quarantine Act B.E 2507
- 1978 : Thailand ratified IPPC
amended
- 1999 : Plant Quarantine Act B.E. 2542 (2 nd Edition)
- 2008 : Plant Quarantine Act B.E. 2551 (3 nd Edition)
The Present Plant Quarantine Act

Present

Plant Quarantine Act B.E. 2507 (1964)

amended

Plant Quarantine Act (2nd Edition)

B.E. 2542 (1999)

Plant Quarantine Act (3rd Edition)

B.E. 2551 (2008)

Plant Quarantine Act.

- Enforcement on March 1, 2008
- 27 Sections
- Definition: Plant, Pest Risk Analysis , Phytosanitary certificate for re-export , Health Certificate, specific controlled plant
- Prohibited article , Restricted article, Unprohibited article
- Section 15 : mention for export and re-export

- **MOAC Notification**, such as:
 - Specification of plants and carriers from certain sources as prohibited articles, of exceptions and conditions under the plant Quarantine Act.
- **DOA Notification**, such as :
 - Specifications, methods and conditions of pest risk analysis for the importation of prohibited articles
 - Criteria, procedures and conditions for the importation or bringing in transit of prohibited, restricted and unprohibited articles
 - Re: Conditions for Import of Apple from the Republic of Poland B.E. 2562 (2019)



NOTIFICATION OF MINISTRY OF AGRICULTURE AND COOPERATIVES

**Re: SPECIFICATION OF PLANT PESTS AS PROHIBITED ARTICLES UNDER THE
PLANT QUARANTINE ACT B.E. 2507 (1964) (No.6) B.E. 2550 (2007)**

(G/SPS/N/THA/151) 369

NOTIFICATION OF MINISTRY OF AGRICULTURE AND COOPERATIVES

**Re: SPECIFICATION OF PLANT PESTS AS PROHIBITED ARTICLES UNDER THE
PLANT QUARANTINE ACT B.E. 2507 (1964) (No.7) B.E. 2550 (2007)**

(G/SPS/N/THA/159) 103

Prohibited Articles (Pest) under PQ Act

Number of Quarantine Pest 472 species

• Fungi	83
• Bacteria	39
• Protozoa	2
• Virus	91
• Rickettsia	1
• Viroid	15
• Mycoplasma	2

• Phytoplasma	8
• Insect	107
• Mite	32
• Nematode	44
• Weed	39
• Unknown Etiology	9



NOTIFICATION OF MINISTRY OF AGRICULTURE AND COOPERATIVES

**Re: SPECIFICATION OF PLANTS FROM CERTAIN SOURCES
AS RESTRICTED ARTICLES, OF EXCEPTIONS AND
CONDITIONS UNDER THE PLANT QUARANTINE ACT**

B.E. 2507 (1964) B.E. 2550 (2007)

(G/SPS/N/THA/153)

Restricted Articles: List

Dried tea leaves, coffee beans, cotton lint

White rice, broken rice, par-boiled rice

Agaricaceae i.e. mushroom

Apiaceae i.e. *Coriandrum sativum*, *Daucus carota*,
 Pastinaca sativa, *Petroselinum crispum*,
 Apium spp.

Araceae i.e. *Colocasia esculenta*, *Aglaonema* spp.,
 Anthurium spp., *Caladium* spp.,
 Dieffenbachia spp., *Philodendron* spp.,
 Zantedeschia spp.

Restricted Articles: List

Asteraceae i.e. *Helianthus annuus*, *Lactuca sativa*
Aster spp., *Chrysanthemum* spp.

Boraginaceae i.e. *Myosotis* spp.

Brassicaceae i.e. *Wasabia japonica*, *Brassica* spp.,
Raphanus spp.

Restricted Articles: List

Caryophyllaceae	i.e. <i>Dianthus caryophyllus</i> , <i>Gypsophilia</i> spp.
Chenopodiaceae	i.e. <i>Spinacia oleracea</i>
Convolvulaceae	i.e. <i>Ipomoea</i> spp.
Cucurbitaceae (excluding fruit)	i.e. <i>Citrullus lanatus</i> , <i>Momordica charantia</i> , <i>Cucumis</i> spp., <i>Cucurbita</i> spp., <i>Luffa</i> spp.
Cyperaceae	i.e. <i>Eleocharis dulcis</i>
Dioscoreaceae	i.e. <i>Dioscorea batatas</i>
Euphorbiaceae	i.e. <i>Ricinus communis</i>

Restricted Articles: List

Fabaceae i.e.	<i>Arachis hypogaea</i> , <i>Cajanus cajan</i> , <i>Cicer arietinum</i> , <i>Glycine max</i> , <i>Phaseolus vulgaris</i> , <i>Pisum sativum</i> , <i>Vigna</i> spp.
Geraniaceae i.e.	<i>Geranium</i> spp.
Iridaceae i.e.	<i>Gladiolus</i> spp.

Restricted Articles: List

Liliaceae i.e.	<i>Asparagus officinalis</i> , <i>Allium</i> spp., <i>Lilium</i> spp., <i>Narcissus</i> spp., <i>Tulipa</i> spp.
Malvaceae i.e.	<i>Abelmoschus esculentus</i>
Orchidaceae i.e.	<i>Sesamum indicum</i>
Poaceae i.e.	<i>Avena sativa</i> , <i>Hordeum vulgare</i> <i>Panicum miliaceum</i> , <i>Bambusa</i> spp. <i>Triticum</i> spp., <i>Zoysia</i> spp.
Rosaceae i.e.	<i>Rosa</i> spp.,
Zingiberaceae i.e.	<i>Zingiber officinale</i>



NOTIFICATION OF MINISTRY OF AGRICULTURE AND COOPERATIVES

**Re: SPECIFICATION OF PLANTS AND CARRIERS FROM
CERTAIN SOURCES AS **PROHIBITED ARTICLES**, OF
EXCEPTIONS AND CONDITIONS UNDER THE PLANT
QUARANTINE ACT B.E. 2507 (1964) (No.5) B.E. 2550 (2007)
(G/SPS/N/THA/152)**

Prohibited Articles-Plants:

Fresh fruits

27 species

25 Genera

6 Genera in Family Cactaceae

Family Cucurbitaceae

Any parts of plants

8 species

11 Genera

Family Solanaceae

Prohibited Articles (Cont.)

- Soil , organic fertilizer, agricultural microorganisms animal pest of plant
- Earthworms, insect, mite, nematode, snails, slug, weed, parasites and predators

Plant

- **Definition : (Section 4)**

“plant” means all species of plant Including terrestrial, aquatic and other kinds of plant, including any parts thereof such as the stems, bud, stock, shoot, offshoots, branch, leaves, root, rhizomes, bulbs, flower, fruits, seeds and cultures and spores of mushrooms,by they propagable or dead; including predators, parasites, silkworms, silkworm-eggs, silk-cocoons, bees, bee-hives, and microorganism

Criteria and procedures for importation or bringing in transit

Plant importation under PQ Act B.E. 2507



Prohibited article

- Import permit
- Phytosanitary certificate
- Shall be made through PQ station



Restricted article

- Phytosanitary certificate
- Shall be made through PQ station



Unprohibited article

- Phytosanitary certificate
- can be made through any ports

(Plant propagation/Seed + Non-GMOs)

Stipulation of prohibited or restricted articles (Section 6)

Prohibited articles (All countries)



①

Plant and
carrier



②

GMOs



③

Pest

Importation of prohibited article classified to 3 objectives

- * Research**
- * Commercial**
- * Other purposes**

Prohibited Article process

- 1. official letter from NPPO of exporting country
- 2. check document
- 3. add in list of conduct PRA
- 4. conducted PRA

Committee

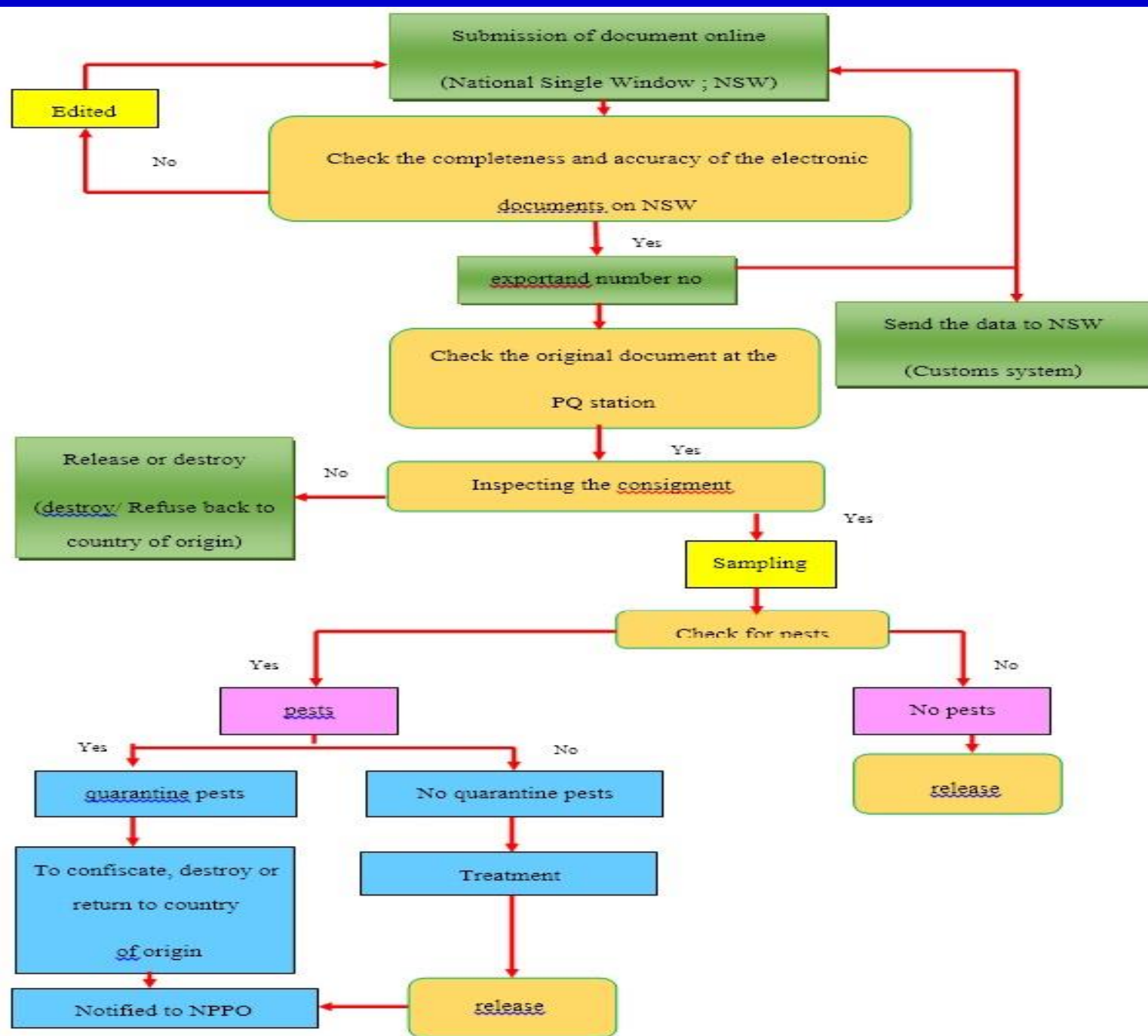
DOA:

- 1. Technical Plant quarantine Sub- committee
for *Commercial and other purpose*
- 2. Technical Plant quarantine Sub- committee for
research proposed

MOAC:

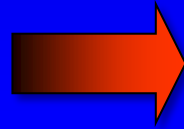
Plant quarantine Committee *****

3. Import procedure



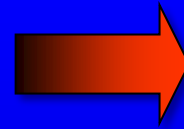
Regulations related to seed movement

Quality control



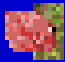


Plant Act

**Phytosanitary
system**



Plant Quarantine Act

Import Seeds

-  Seed Regulatory sub division is in charge of quality control of commercial seed
-  There are 33 controlled plant species for which the minimum germination and physical purity standards of commercial seeds
-  The central seed testing lab is responsible for testing seed quality of controlled crops for collection, storing, importation and exportation according to standards required by the Plant Act

Example

: Seeds

: Fresh fruit

Sampling and inspection

1. Seed ISTA
2. Grain ISTA
3. Fruits 450 or 600
4. Plants 2%
5. etc.

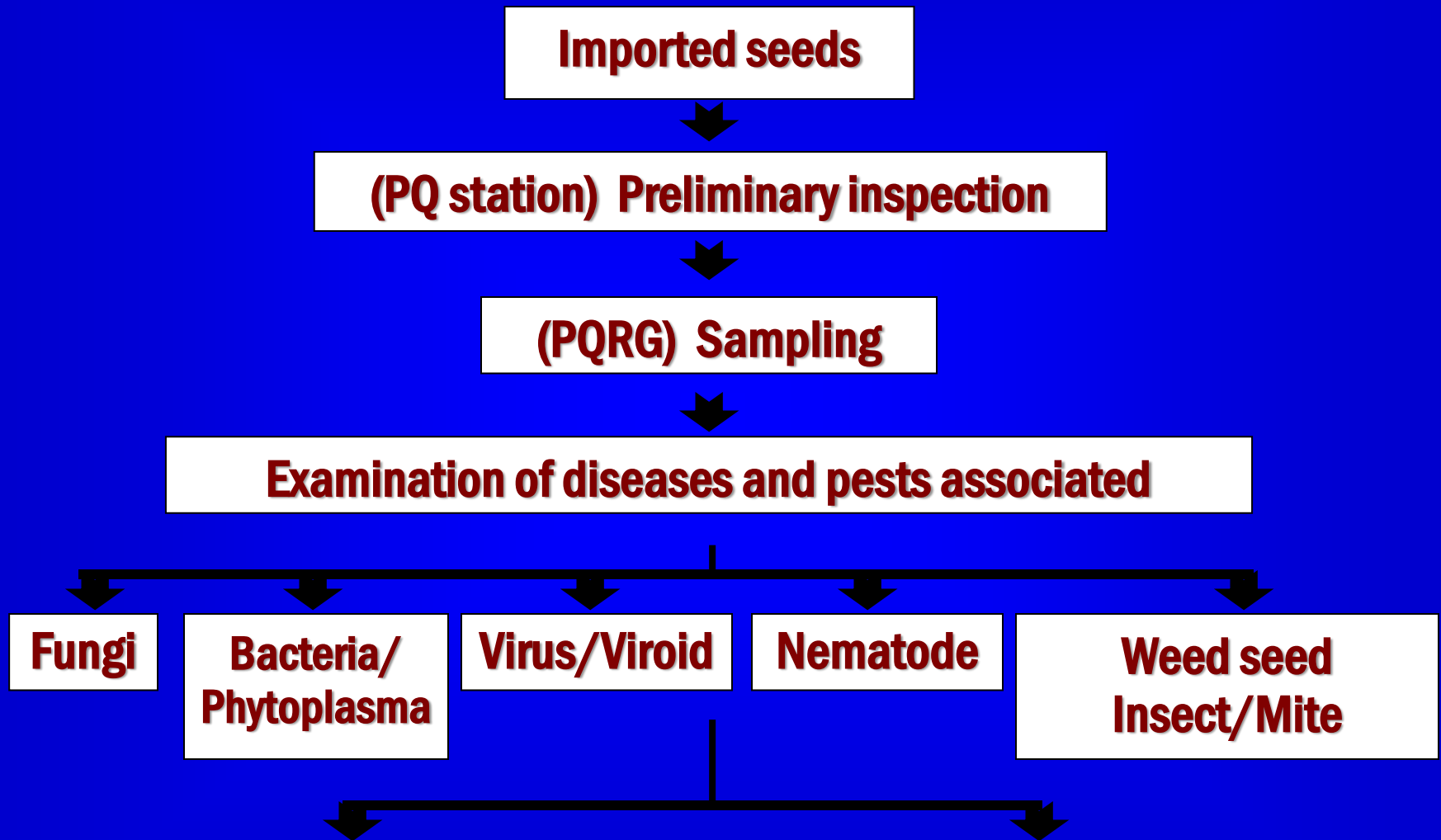
Inspection of certain import consignments

Grain : Preliminary inspection by OAR.

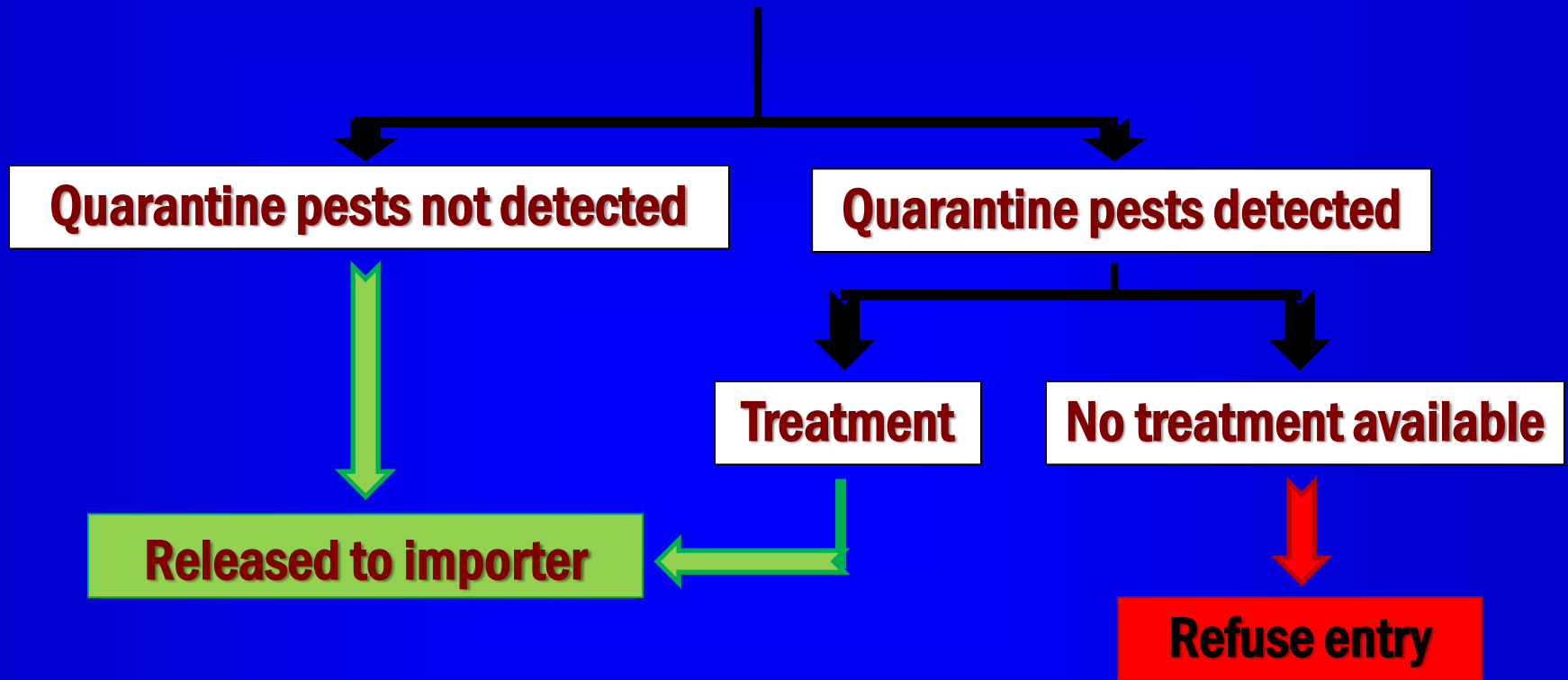
**Seed : Preliminary inspection by OAR and identification
by PPRDO (Prohibited and restricted seeds)**

**Plant: Preliminary inspection by OAR. + post entry
quarantine +identification by PPRDO**

EX. Inspection of imported seed

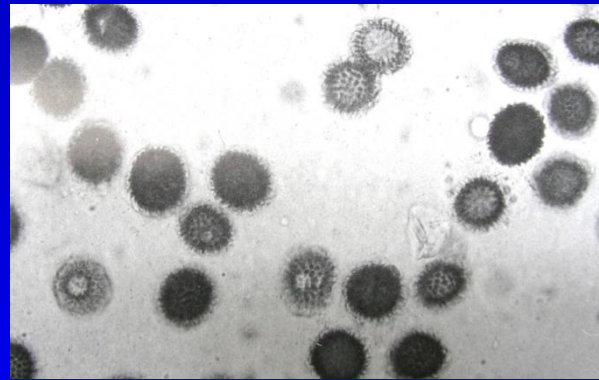


Inspection of imported seed

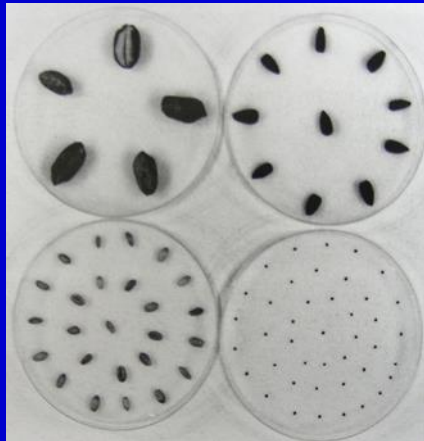




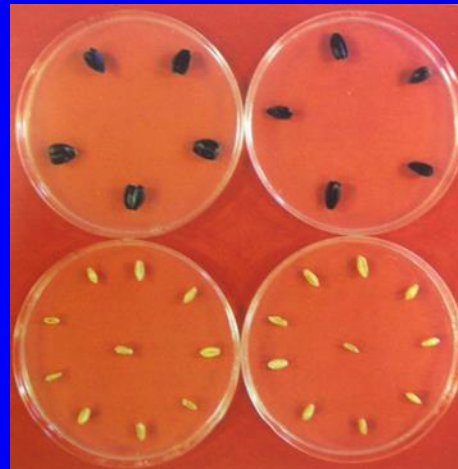
Dry seed



Washing test



Blotter method



Agar Plate



Seedling Symptom



Temperature probes placing in container



Confirmation of the temperature probes



Sampling & Inspection at entry point





Plants

Lady palm,
Japanese Peace Palm



Orchid





sunfruits
ica - peru

Packing:
Sun Fruits Exports S.A.
FOA: 11102771360
Reg.FS.: 016-02016-PE

Grower: **002** Code: 016-00929-02
SOCIEDAD AGRICOLA DON LUIS S.A.

TABLE GRAPES RED GLOBE	CAT 1
Net Weight: 8.2 Kg - 18.1 Lb	Quality:
Product Code: 112014043	XLCO-310

Treated with sulfur dioxide for fungicide use

Barcode: RDL011330001

Pack: U209 BAG
Date: 04 Jan 2011



sunfruits
ica - peru

Packing:
Sun Fruits Exports S.A.
FOA: 11102771360
Reg.FS.: 016-02016-PE

Grower: **002** Code: 016-00929-02
SOCIEDAD AGRICOLA DON LUIS S.A.

TABLE GRAPES RED GLOBE	CAT 1
Net Weight: 8.2 Kg - 18.1 Lb	Quality:
Product Code: 102125303	JCO-210

Shipped by SOCIEDAD AGRICOLA DON LUIS S.A.
Treated with sulfur dioxide for fungicide use

Barcode: RDL011170001

Pack: U209 BAG
Date: 30 Dec 2010



Variety	M	L	<input checked="" type="checkbox"/> XL	J	JJ
RED GLOBE					
ICA	Wraps		Bags		<input checked="" type="checkbox"/>
Code: 016-00559-01 016-012-16-PE	C	<input checked="" type="checkbox"/> CO	O	P	
DATE:	EXPORT DESTINATION: THAILAND				
	Net weight when packed:				
	4.5 Kg.		5 Kg.		
Produce of Perú	9.0 Kg.		18 Lb (8.2 Kg.)		<input checked="" type="checkbox"/>

No information of

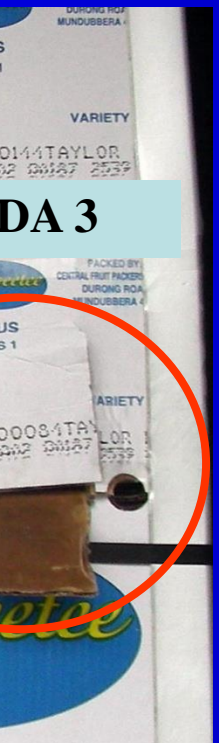
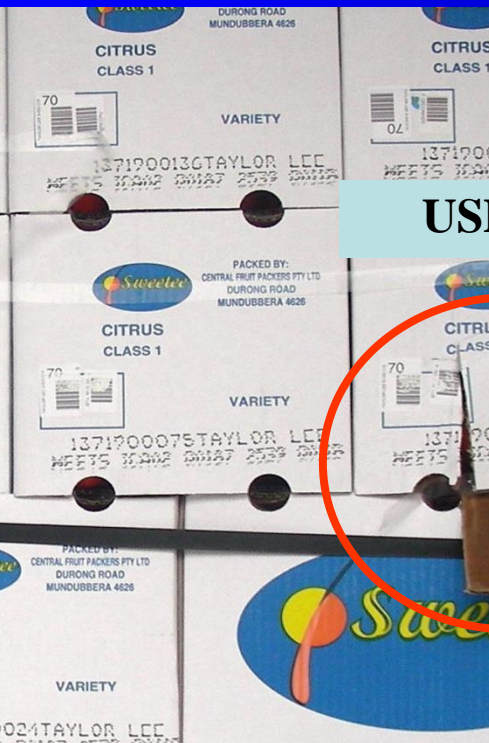
- Product from Peru

No information of

- Name of fruit
- Orchard registration no.
- Packinghouse registration no.
- Packing date

Placement of Temperature Sensors



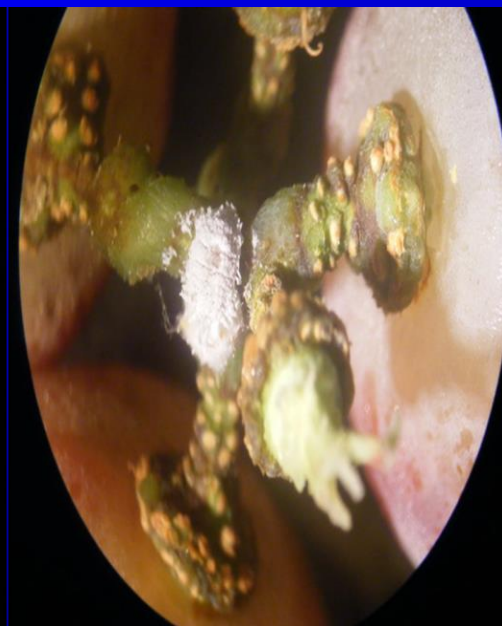
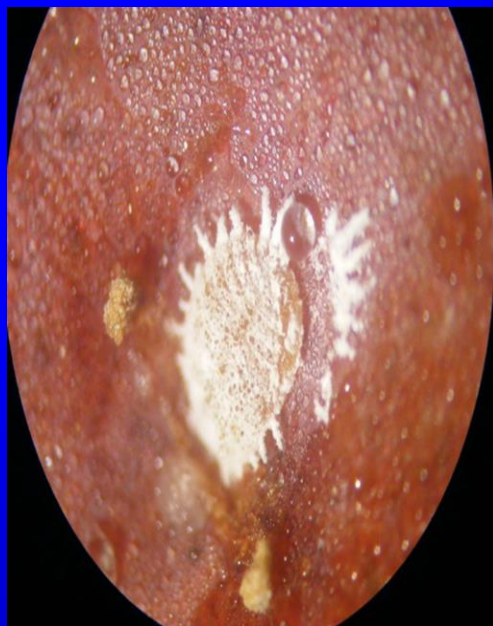




DataCORDER (If Equipped)

Press **ALT. MODE** to access

- dC1 Recorder Supply Temperature
- dC2 Recorder Return Temperature
- dC3-5 USDA 1, 2, 3 Temperatures
- dC6-13 Network Sensors 1-8
- dC14 Cargo Probe 4 Temperature
- dC15-19 Future Expansion
- dC20-24 Temperature Sensors 1-5 Calibration
- dC25 Future Expansion
- dC26,27 S/N, Left 4, Right 4
- dC28 Minimum Days Left
- dC29 Days Stored
- dC30 Date of Last Trip Start
Trip Start: Press **ENTER** for 5 seconds
- dC31 Battery Test



Measures for Non compliance

- ❖ Destruction
- ❖ Refusal the consignment
- ❖ Treatment



Audit of Export Certification



Pre-clearance Inspection



Thank you

Thank you

Thank you

Thank you